

Complete series of load cells for.

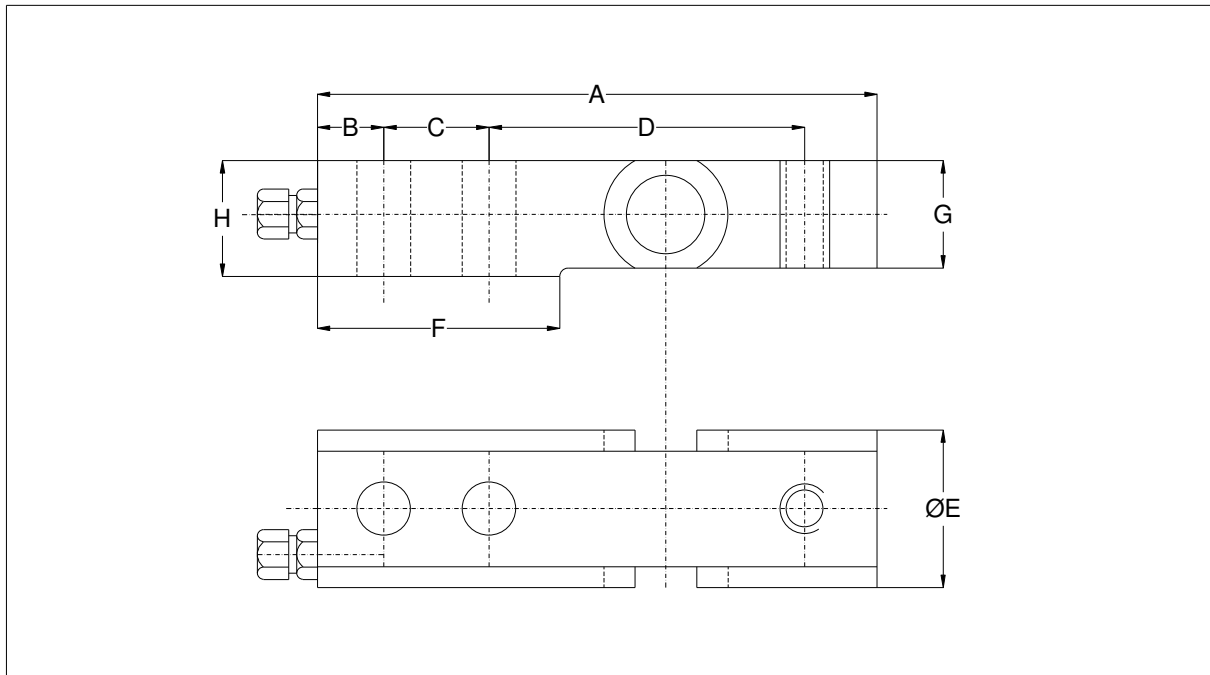
Platforms – Tanks – Hoppers.

Better than 1500 divisions.

Fully welded stainless steel.

Hermetically sealed to IP68.

Capacities: 250Kg – 500Kg - 1t - 2t - 5t – 10t



MODEL	RANGES KG	A	B	C	D	F	G	H	ØI	ØJ	ØE	CABLE M
2250	250 – 1.000	135	17,5	25,4	76,2	55	26	28	13	M12	38,2	4
2250	2.000	135	17,5	25,4	76,2	55	26	28	13	M16	38,2	4
2250	5.000	170	20	38,1	95,3	76	36	39	21	21	50,8	6
2250	10.000	220	26	50,8	120,7	105	46	52	26	26	68	10

Accuracy class	AS, C3 at 20 C.	3000 DIVISIONS
Min. dead load (E_{min})	% of E_{max}.	0
Safe load limit (E_{lim})	% of E_{max}.	200
Linearity error	%	<+/-0,020
Hysteresis error	%	<+/-0,020
Repeatability	%	<+/-0,015
Temperature effects: Zero	%/°C	<+/-0,0015
Temperature effects: Span	%/°C	<+/-0,0015
Temperature compensation	*C	-10 to +40
Temperature limits	*C	-30 to +70
Sensitivity (C)	MV/V	2+/-0,1%
Nominal input voltage (Max)	V dc or ac	10 (15)
Input resistance	Ohm	400+/-25
Output resistance	Ohm	350+/-2
No load out put	%	<+/-2
V.min.		E.max./10.000
Insulation resistance	M ohms	>5000

Exe.+ Red Exe.- Blue Sig.+ Green Sig.- Yellow